

A woman with long, wavy brown hair is smiling and wearing a white, long-sleeved blouse with intricate embroidery. The blouse features colorful floral and geometric patterns in shades of red, green, and blue. It has a white collar with a red floral brooch, a white button placket, and a scalloped hem. The blouse is adorned with several ribbons in red, green, and blue, some of which are tied into bows. The background is a solid, dark brown color.

Embroidered Tassels

by Marlis Bennett

Designer's Tip:

Although wing needles are synonymous with a pin stitch, using one on delicate ribbons could possibly damage the ribbons. A large topstitching needle will render the same effect with no risk to the ribbons.

Someone else's trash can be your treasure. The ribbons that adorn this basic white linen blouse had been salesman samples that found their way into my resource center, which you might know as a stash. The challenge was to use these beautiful 6-7" strips of ribbon. With an abstract layout and tassel embroideries, a plain white shirt went from blah to wow!

Embroidery Machines

Bernina Artista 200

Embroidery Products

Tassels and Trims

by Louisa Meyer with accompanying CD collection

STUDIO BERNINA® Tassels & Trims II by Louisa Meyer licensed collection 773

Materials

one white shirt
 3 1/2 - 4 yd. assorted ribbons in various widths
 2 yd. gimp cord
 60 wt cotton thread
 one 16/100 Top stitch needle
 size 80 Organ embroidery needles
 size 75 embroidery needles
 Isacord embroidery thread
 tear-away embroidery stabilizer
 HR5 Temporary Adhesive Spray
 edgestitch foot (Bernina #10)
 clear foot (Bernina #34C)
 clear embroidery foot (Bernina #39)
 seam ripper
 water soluble fabric marker

Step 1. Preparation

Preshrink all ribbons using a steam iron set to the appropriate setting for ribbon content. Use plenty of steam and let the iron rest on the ribbons until all shrinkage is complete. Ribbons with metallic content

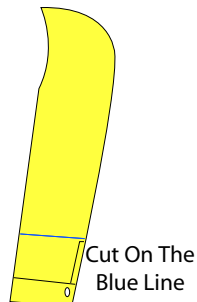
shrink considerably. Pin ribbons to front and back of shirt to match sample garment or in pattern of your choice. Ends that are placed under ribbons don't require that you finish that edge. However, ribbon ends that are free standing should be either folded into a point with the raw edges on the under side, or simply fold the cut edge under.

Step 2. Ribbon

Select the pin stitch (stitch 720 on the BERNINA artista 200) on your machine. Attach edgestitch foot to machine. Insert the topstitch needle and thread it with 60 wt cotton embroidery thread in both the needle and bobbin. Place garment under foot, positioning the ribbon so that it runs directly adjacent to the center guide of the foot. Adjust needle position so that the straight part of the stitch is sewn to the right of the ribbon and the pin/bite of the stitch sews into the ribbon. Sew around all exposed edges of ribbons.

Step 3. Sleeves

Cut sleeves to desired length reserving one cuff. A good indicator of where to cut is usually right



above the sleeve placket. On the sleeve, turn up a 1/4" hem to the right side of the fabric. This will provide a clean finish inside the sleeve. Cover the pressed hem with a length of ribbon, aligning the ribbon with the pressed edge

of the sleeve. Stitch lower edge of ribbon in place with straight stitch, stitch upper edge of ribbon in place with pinstitch and topstitching needle.



Remove the cuff from the discarded portion of the sleeve. Open the seam along the top edge of the cuff and it should come away easily. Remove the button. Pinstitch a length of ribbon between the location of the button and the button-



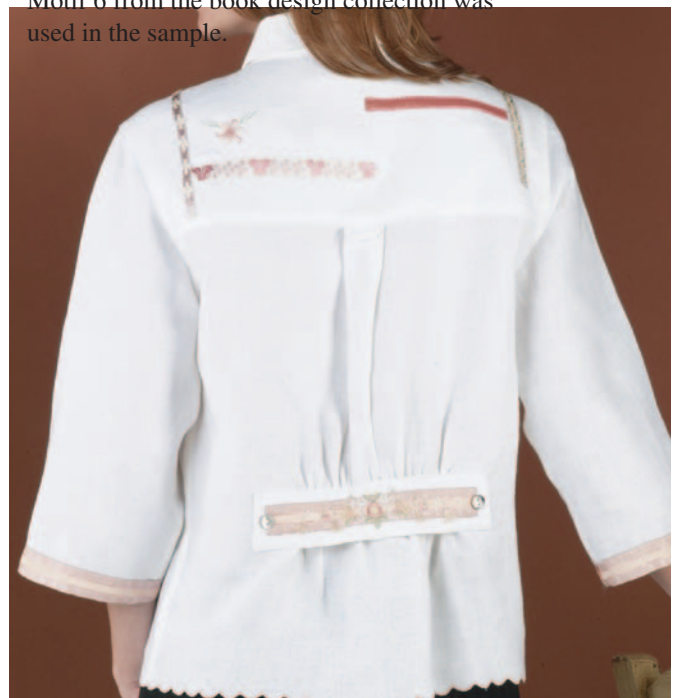
hole.

Step 4. Embroidery

Motifs #6, 7 and 8 were used from the Tassels & Trims book with CD. Motifs 84/70 and 87/73 were used from the artista CD/artista card design collection.

Hoop tear-away stabilizer in an appropriate sized hoop. Spray tear-away stabilizer with HR5 Temporary Adhesive Spray.

Select desired motif and embroider. Refer to Tassels & Trims for instructions on cutting the thread to release the tassel. Embroider one large motif on ribbon-bedecked cuff. Motif 6 from the book design collection was used in the sample.



Step 5. Attaching Cuff to Back of Blouse

Place the embellished cuff just below the waist in the center back of the shirt. Gather the shirt fullness into the cuff area and pin along the cuff upper edge. With a straight stitch and edgestitch foot, sew the cuff to the shirt back along sides and top only.

Step 6. Blouse Lower Edge

Using a water soluble fabric marker, draw a line designating the finished length on shirt. Thread size 75 embroidery needle with decorative embroidery thread. Wind bobbin to match and insert into machine. Select stitch #416, a scallop satin stitch, and engage pattern extend function two times. Sew (foot #34C) along the drawn line with tear-away stabilizer under the garment. Trim the lower edge of the scallop away using sharp curved tip embroidery scissors leaving a scant 1/8" fabric lip on lower edge. Attach the clear embroidery foot (#39) to the machine. Thread gimp cord through the hole in the foot. Select stitch #354, satin stitch appliqué stitch. Sew cord on top of fabric lip covering both the cord and the fabric lip with the satin stitch. This gives the garment a more professional stable finish to the lower edge.

Step 7. Decorative Buttonholes

Attach clear foot #34C to machine. Using decorative thread in embroidery needle, stitch single pattern of stitch #707 on each side of buttonhole on shirtfront. Engage mirror image as desired.

Step 8. Ribbon Pin at Neck



The ribbon adornment at the neck was a purchased piece from a long time ago and a galaxy far away. However, with a small 3/4" square of fabric and some ribbons, it is easy to recreate. Using 1/4" to 3/8" ribbons, gather along one edge of each ribbon. Place innermost ribbon in center of fabric square creating the center circle. Hand stitch only the center in place. Repeat for second ribbon, placing gathered edge directly under the first ribbon. Repeat one more time for outermost ribbon. Sew a few decorative beads in center. Trim fabric square and attach pin back to ribbon embellishment.

